

Aluminum Compression Lugs

Dual Rated - Narrow Tang

Conductor Range: 1000kcmil-1/0

A

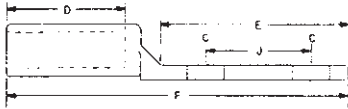
TYPE 2IACL

Features

- Manufactured from high strength aluminum alloy
- Four OD sizes accommodate a wire range from 1/0 to 1000 kcmil
- Chamfered barrel
- Prefilled with DE-OX
- Color coded end caps inserted in barrel and ink marked with die number and number of crimps
- Electro tin plated
- Suitable for use in circuits rated 35KV or less, proper high voltage spacing and insulation techniques must be used
- Rated to 90° C

Benefits

- Provides maximum conductivity and excellent crimping characteristics
- Requires only four installation dies to crimp eleven conductor sizes. Tang width remains constant within an OD size and is designed to fit transformer pads.
- Provides easy conductor insertion
- Prevents oxides from forming
- Prevents foreign materials from entering the connector prior to usage and color code identifies the proper compression die
- Provides low contact resistance
- Ensures reliability
- Application versatility



Catalog Number	Wire Size	Wire Range When Installed With IDT-12-N Tool	Tang Width	Bolt Size	Dimensions					IlSCO Die Index	Die Color Code
					D	E	F	C	J		
2IACL-1/0	1/0	1/0-1	1	1/2	1-1/2	3-1/4	5-3/16	9/16(2)	1-3/4	9	Orange
2IACL-2/0	2/0	2/0-1	1-1/4	1/2	1-7/8	3-1/4	5-3/4	9/16(2)	1-3/4	12	White
2IACL-3/0	3/0	3/0-1	1-1/4	1/2	1-7/8	3-1/4	5-3/4	9/16(2)	1-3/4	12	White
2IACL-4/0	4/0	4/0-1	1-1/4	1/2	1-7/8	3-1/4	5-3/4	9/16(2)	1-3/4	12	White
2IACL-250	250kcmil	250kcmil-1/0	1-1/4	1/2	1-7/8	3-1/4	5-3/4	9/16(2)	1-3/4	12	White
2IACL-300	300kcmil	300kcmil-2/0	1-1/4	1/2	2-3/8	3-1/4	6	9/16(2)	1-3/4	14	Blue
2IACL-350	350kcmil	350kcmil-3/0	1-1/4	1/2	2-3/8	3-1/4	6	9/16(2)	1-3/4	14	Blue
2IACL-500	500kcmil	500kcmil-4/0	1-1/4	1/2	2-3/8	3-1/4	6	9/16(2)	1-3/4	14	Blue
2IACL-600	600kcmil	600kcmil-250kcmil	1-39/64	1/2	3-3/16	3-1/4	7	9/16(2)	1-3/4	18	Yellow
2IACL-750	750kcmil	750kcmil-500kcmil	1-39/64	1/2	3-3/16	3-1/4	7-1/4	9/16(2)	1-3/4	18	Yellow
2IACL-1000	1000kcmil	1000kcmil-750kcmil	1-39/64	1/2	3-3/16	3-1/4	7-1/4	9/16(2)	1-3/4	18	Yellow

Tooling Information

Catalog Number	Color	ILSCO					Burdny							Thomas & Betts			Anderson	
		Die Index	ILC-12-N ILC-12H-N 12 Ton	ILCB-12-N ILCB-12-LIO	ILC-15H	IDT-12-N Dieless	Die Index	Y34A	Y35	Y39	Y45	Y46	Y48B	Y644M Dieless	Die Index	13642 12 Ton	TBM 15 15 Ton	21940 40 Ton
2IACL-1/0	Orange	9	(3)	(3)	(2)	(1)	297	(2)	(2)	(2)	(2)	(2)	(1)	50	(2)	(2)	(2)	(2)
2IACL-2/0	White	12	(1)	(1)	(2)	(1)	324	(2)	(2)	(2)	(2)	(2)	(1)	71	(2)	(2)	(2)	(2)
2IACL-2/0	White	12	(1)	(1)	(2)	(1)	324	(2)	(2)	(2)	(2)	(2)	(1)	71	(2)	(2)	(2)	(2)
2IACL-250	White	12	(1)	(1)	(2)	(1)	324	(2)	(2)	(2)	(2)	(2)	(1)	71	(2)	(2)	(2)	(2)
2IACL-2/0	White	12	(1)	(1)	(2)	(1)	324	(2)	(2)	(2)	(2)	(2)	(1)	71	(2)	(2)	(2)	(2)
2IACL-300	Blue	14	(2)	(2)	(2)	(1)	299	-	(2)	(2)	(2)	(2)	(1)	87	(2)	(2)	(2)	(2)
2IACL-350	Blue	14	(2)	(2)	(2)	(1)	299	-	(2)	(2)	(2)	(2)	(1)	87	(2)	(2)	(2)	(2)
2IACL-500	Blue	14	(2)	(2)	(2)	(1)	299	-	(2)	(2)	(2)	(2)	(1)	87	(2)	(2)	(2)	(2)
2IACL-600	Yellow	18	(3)	(3)	(3)	(1)	936	-	-	(3)	(3)	(3)	(1)	115	(3)	(3)	(3)	-
2IACL-750	Yellow	18	(3)	(3)	(3)	(1)	936	-	-	(3)	(3)	(3)	(1)	115	(3)	(3)	(3)	-
2IACL-1000	Yellow	18	-	-	(3)	(1)	936	-	-	(3)	(3)	(3)	(1)	115	(3)	(3)	(3)	-

All wire sizes, unless noted otherwise, are American Wire Gauge (AWG)

See stuffer sheet for complete information on tooling.

Tested to UL 486A/B, UL File E6207